

GN 132 | Two-way connecting clamps

Aluminium



- 1
- 2
- 3
- 4
- 5
- 6
- 7
- 8
- 9
- 10
- 11
- 12
- 13
- 14
- 15
- 16
- 17
- 18

MATERIAL

AISI 304 stainless steel screws and nuts.

STANDARD EXECUTIONS

Surface finish index:

- **BL**: natural colour.
- **SW**: epoxy resin coating resistant to UV rays, RAL 9005 black colour.

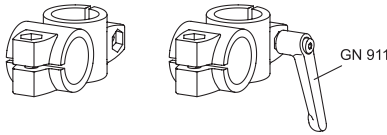
FEATURES AND APPLICATIONS

The assembly holes of GN 132 connecting clamps allow an excellent match with tubes GN 990 (see page 1368).

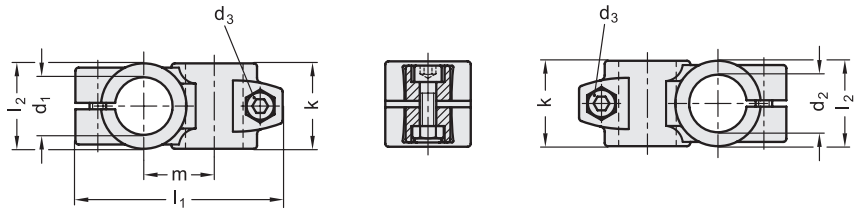
The clamping screw d_3 may be replaced by clamping kit GN 911 (see page 1372).

SPECIAL EXECUTIONS ON REQUEST

Different combinations of holes d_1/d_2 .



Conversion Table	
1 mm = 0.039 inch	
d1	
mm	inch
20	0.78
25	0.98
30	1.17
32	1.25
35	1.37
40	1.56
42	1.64
45	1.76
48	1.87
50	1.95
60	2.34



Code BL	Code SW	Description	d1	d2	d3	k	l1	l2	m	d3 Clamping kit	⚖️
GN.42511	GN.42516	GN 132-B20-B20-40-2-*	20	20	M8	40	97	40	33	GN 911-M8-32	215
GN.42531	GN.42536	GN 132-B25-B25-40-2-*	25	25	M8	40	97	40	33	GN 911-M8-32	192
GN.42551	GN.42556	GN 132-B30-B30-40-2-*	30	30	M8	40	97	40	33	GN 911-M8-32	170
GN.42571	GN.42576	GN 132-B30-B30-56-2-*	30	30	M10	56	125	56	45	GN 911-M10-40	570
GN.42591	GN.42596	GN 132-B32-B32-56-2-*	32	32	M10	56	125	56	45	GN 911-M10-40	535
GN.42611	GN.42616	GN 132-B35-B35-56-2-*	35	35	M10	56	125	56	45	GN 911-M10-40	500
GN.42631	GN.42636	GN 132-B40-B40-56-2-*	40	40	M10	56	125	56	45	GN 911-M10-40	417
GN.42651	GN.42656	GN 132-B40-B40-65-2-*	40	40	M10	65	143	65	53	GN 911-M10-55	835
GN.42671	GN.42676	GN 132-B42-B42-65-2-*	42	42	M10	65	143	65	53	GN 911-M10-55	780
GN.42691	GN.42696	GN 132-B45-B45-65-2-*	45	45	M10	65	143	65	53	GN 911-M10-55	732
GN.42711	GN.42716	GN 132-B48-B48-65-2-*	48	48	M10	65	143	65	53	GN 911-M10-55	670
GN.42731	GN.42736	GN 132-B50-B50-65-2-*	50	50	M10	65	143	65	53	GN 911-M10-55	630
GN.42751	GN.42756	GN 132-B50-B50-80-2-*	50	50	M10	80	169	80	65	GN 911-M10-55	1460
GN.42791	GN.42796	GN 132-B60-B60-80-2-*	60	60	M10	80	169	80	65	GN 911-M10-55	1060

Connecting clamps

* Complete the description of the standard item needed by adding the finish of the connector clamps: BL (blank) or SW (black).